

The Guardsman Garage Barrier Installation Instructions

Thank You for choosing Engineered by Zicam!

Thank you for purchasing from Engineered by Zicam. We pride ourselves on our customer service so if you have any issues or questions, please call us on **01384 442 646**, email at helpme@zicam-security.co.uk

Below is a link to a step-by-step installation video. Please use these instructions as well as the install video to guide you through the install process. Simply scan the QR code with your smart phone camera and click to follow the link.

Skill Level Required:

Advanced – please ensure you have the relevant skills necessary to complete the job. If in doubt please seek professional help. Installation can be arranged by Engineered by Zicam – 01384442646.



Equipment required for installation:

- SDS Drill and bits – 12ø and 16ø
- Spirit Level and Tape Measure
- Metal detector 100mm depth
- Vacuum
- 17mm Spanner
- Allen key
- Hole/Pipe cleaner

Lifting Technique:



Equipment included:

Barrier Fixings:	Qty	Barrier Parts:	Qty
Floor Template (Wood) and screws	1	Arm Post	1
Sleeve Anchors	8	Locking Post	1
Shear Off Nuts	8	Wall Mount	1
Base Plate Screws	2	Lock and Key	1
Washers	8	Base Plate Covers	2
Wall Anchors with Washer	2		

Fixings Kit:

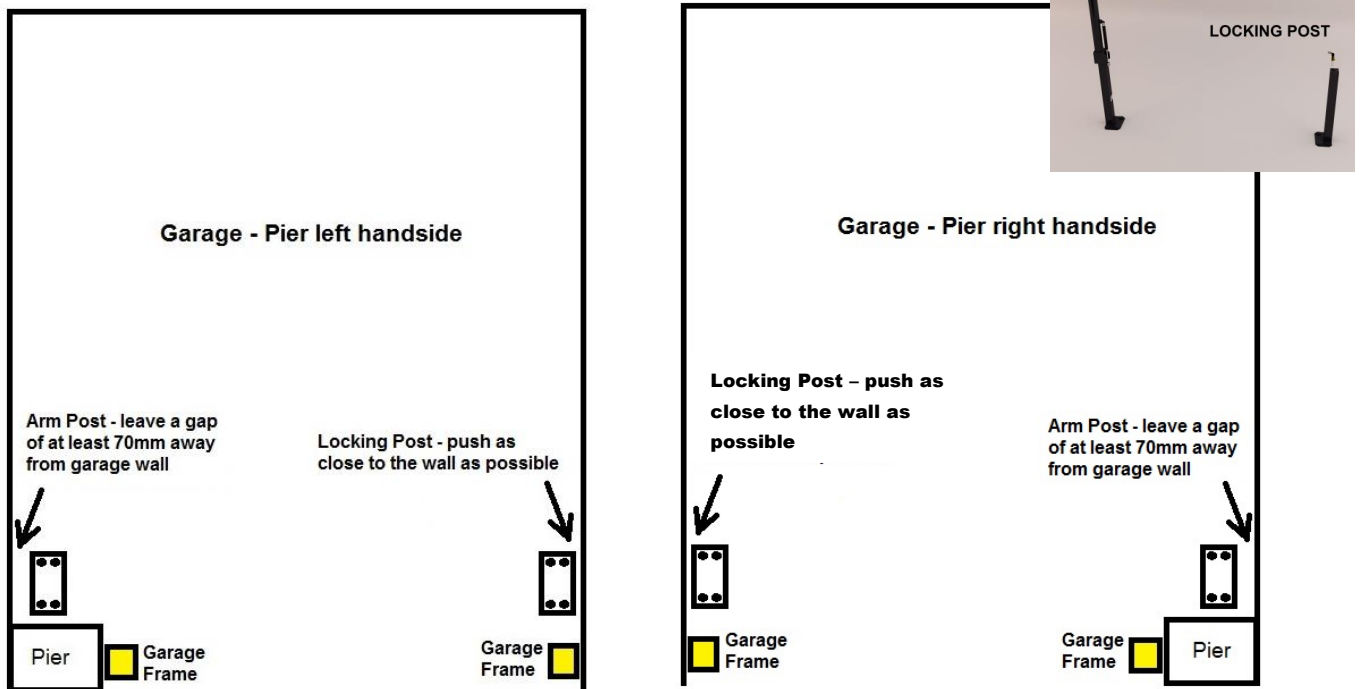
1. 8 x Sleeve anchors (replace nut with shear off nut)
2. 8 x Shear off nuts
3. 10 x Washers (8 on sleeve anchors 2 for wall anchors)
4. 2 x Security screws (for 2 base plate covers)
5. 2 x Wall anchors



Pre-Installation Requirements:

1. Accept installation waiver and customer guarantee:
<https://www.engineeredbyzicam.com/installation-disclaimer/>
2. Ensure wall and floor are suitable for installation.
3. Clear 1 metre radius around install location and check for any metal or pipe works under floor and in wall. Also check how garage door opens and closes. Adjust location accordingly.
4. For optimum security we recommend you position your Guardsman in accordance with the below diagram – ‘Garage Layout/Template’, Arm Post behind the bricked garage pier (bricked indent into garage doorframe) and Locking Post against the opposite wall.
5. If you have purchased an anchor point – ensure this is facing into your garage on your preferred side.

Garage Layout and Template:



70mm Gap between board edge and hole

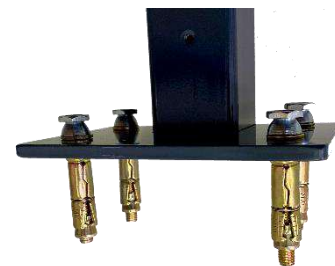


Installation Steps:

1. Complete pre-installation requirements.
2. Remove barrier and contents from the wood packaging. This wooden packaging then becomes your floor template.
3. Use square edge of template to check garage wall is perpendicular to floor (if it isn't, mark on the floor where the wall protrudes to).
4. Measure the width of your garage, at the narrowest point, from wall to wall, or floor mark to floor mark – the **Guardsman has a maximum span of 2600mm** from arm post to locking post. If your garage, wall to wall width is **smaller** than 2600mm continue to step 6, if not read and implement step 5.
5. **IMPORTANT:** If your garage is wider than 2600mm then adjust your template to a width of 2600mm from template outer edge to outer edge.



6. Use 2 screws (as pictured) to secure template into chosen position, between garage walls. (Arm Post must be a minimum of 70mm away from wall, as shown on template).
7. Fix into location using supplied screws to hold the template up square against both walls. If wall isn't square or garage width is more than 2600mm, as identified in step 4, use a heavy weight to keep template in place against floor mark in desired location. (A person standing on the template would be ideal).
8. Measure from garage frame to template, on both the left- and right-hand side to ensure these are of equal distance to template. This is to ensure barrier runs square to your garage. (For ease use straight edge of template to mark on floor equal distance from frame on both left and right, then move template to floor markings).
9. Once template is in chosen location mark all 8 floor holes by gently drilling with 12Ø ensuring template remains stationary. This is to mark the floor.
10. Remove template and drill all 8 holes with a pilot 12Ø and then with 16Ø to a depth of 80mm. Ensure drill is square to floor when drilling. (We recommend drilling a pilot hole in the centre of your four marked holes to establish the depth of your concrete garage floor) Continue as instructed below.
 - a. If successful drilling to 80mm depth continue to step 11, if not go to 10b below.
 - b. If drill bottoms out, fix the 8 sleeve anchors to the base plates of each post. Shear off nut and washer holding sleeve anchor to the plate so that it's protruding, as per picture. Clean holes from debris and offer these fixings into the holes. Ensure the plates are sitting flush to the surface. Use a hammer to tap the sleeve anchors down. Once complete continue to step 17.
11. Thoroughly clean out holes and surrounding area from debris using vacuum and hole brush.



12. Insert one sleeve anchor (still with shear off nut on the top) until flush with the surface, into each of the drilled holes. Tap with hammer if needed.
13. Remove each shear off nut from each anchor, by unwinding counter clock-wise. Then remove each washer. Keep these safe for now.
14. if garage width, wall to wall is 2600mm or less insert wall mount into the back of the arm post. Picture below for reference. If greater move onto 15.
15. Place each post onto the erect bolts. Tap the bolts so that the post base plate fits flush to the floor with bolts protruding through base plate. Ensure these are protruding at least 20mm above plate – if not, unwind bolt until they are.
16. Place one washer and one shear off nut on to each protruding bolt and loosely tighten – as per picture. Dispose of spare nut.
17. Pull barrier arm down and push into locking hole. Adjust posts so that this action is free flowing and so that the arm is in line with locking hole opening. Leave in place once happy.
18. Hand tighten shear off nuts.
19. Place spirit level perpendicular against each post and using spanner tighten nuts until base plates are tightly secured to the floor and posts are vertically upright. If needed, to ensure post is vertical, place packer under floor plate to raise post.
20. Continue to tighten until nut shears off leaving only the dome in place. Discard nuts.
21. Test positioning - Take barrier arm out from locking post and erect to the unlocked, upright position. Then return barrier arm to the locked position.
22. Apply steps 21 – 24 if garage width, wall to wall is 2600mm or less. Insert and unwind wall mount in arm post until it sits flush to the wall, in the centre of the brick.
23. Using hole on locking post (under cowl) and wall mount on arm post, drill 2 wall holes to a depth of 55mm, 12mm \varnothing .
24. Thoroughly clean debris from holes and surrounding area using vacuum and brush.
25. Fasten each post to wall using 2 wall anchors. Tap these into the hole and using spanner rotate fixing head clockwise until securely held into wall.
26. Clean up any remaining dust and debris.
27. Attach each floor cover using Allen key and 2 base plate screws to cover each floor plate.
28. Remove lock from packaging and insert into locking end.



Congratulations, your Guardsman install is now complete.

We'd love to see the finished result. Send your pictures to helpme@zicam-security.co.uk

If you feel we could have done something better or you aren't happy with your purchase please let us know and we'll do all we can to rectify the issue. Please include details of the issue along with your contact details.

Thanks again from all of us at Engineered by Zicam.

LOCKING POST



ARM POST

